

▶ Thank you for choosing **SurgiTel®**!

Your SurgiTel® LED headlight has been designed to meet the demanding needs of today’s clinical professionals by allowing you to see, work, and feel your best.

▶ TECHNICAL DATA

| | |
|---|--|
| LED Light | Several optics available |
| LED Life (Estimated on intensity used) | Up to 10,000 hours |
| Battery | Rechargeable Lithium Ion Battery, 7.4V 2,900 mAh |
| AC Charger | Input: 100-240V, 50-60Hz, 0.35A Output: +8.4V, 1.5A |

▶ GENERAL WARNINGS

- The user of this product should be thoroughly familiar with the use and care of this product.
- The user should carefully study the manual before making any attempt to use this product clinically.
- Before each procedure carefully inspect the LED system to ensure proper maintenance.
- Use care not to point the light directly at the eyes during operation; patient use of safety glasses is recommended.

FIRE HAZARD: DO NOT PLACE THE LED LIGHT UNIT ON ANY FLAMMABLE OBJECT WHILE IT IS OPERATING.

WARNING:

- The LED light unit will get hot when left on. Handle with care. It is recommended to turn off the LED before handling LED light or making any adjustments to it.
- Avoid direct light contact with the eyes.
- Avoid direct light irradiation in patient’s eyes; patient use of safety glasses is recommended.

Battery Charger & AC Power Adapter

- Use only the Battery Charger & AC Power Adapter supplied with this system
- Do not disassemble, modify or short circuit
- Do not leave in hot places, such as inside a car or outside in hot weather
- Do not allow to get wet



▶ WARRANTY

SurgiTel’s mission is to provide the best products for your *Vision & Ergonomics at Work*. To support this commitment SurgiTel® warranties all of its products.

SurgiTel® strives to make the best loupes and light systems available. Please inspect and try on product immediately upon receipt. If you notice any issues, contact our customer service department at 800-959-0153.

For both warranty and out-of-warranty issues, contact SurgiTel® Customer Service regarding repairs.

Warranties vary by product. Check www.surgitel.com/warranty for more details. Check www.surgitel.com/help for up to date care information/instructions. Please keep up to date on care information/instructions, as warranties can be affected if product is misused.

▶ PATENT

True color beam family optics, U.S. Patent Numbers: US 9,383,077 B2; US 9,494,299 B2

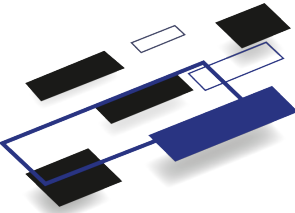
SurgiTel®
a division of General Scientific Corporation
77 Enterprise Drive • Ann Arbor, MI 48103-9503
E-mail support@surgitel.com • www.surgitel.com

SurgiTel®









Odyssey LED

USER INSTRUCTIONS



► CLASSIFICATION

- Protection against electric shock: Class II including AC/DC Adapter.
- Applied parts : No applied parts.
- Protection against harmful ingress of water: ordinary IPXO.

| | | | |
|--|---------------------|---|---|
|  | Direct current |  | Class II equipment |
|  | CE mark |  | Serial No. |
|  | Alternating current |  | Attention, consult accompanying documents |

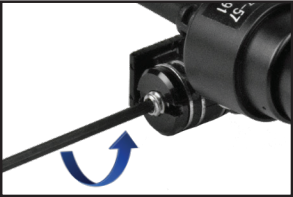
► MAINTENANCE

Storing the LED system in a safe place will prolong the life of the unit. The following guidelines will help in sustaining the LED systems useful life:

- Keep the optical face on the light unit from touching hard surfaces which may cause scratches on the surface. Scratches on the surface will diminish the light quality.
- When cuts or punctures are visible on the system’s light cord, the wireless LED system is no longer safe to use; it should be taken out of service immediately.

Fixing Hinge Tension (too loose or too tight):

- Step 1: Use provided hex key to remove hinge set screw (see photo to the right)
- Step 2: Use two flat-head screwdrivers (placed on each side) to loosen/tighten special screw and nut
- Step 3: Once desired tension is met, reassemble and tighten set screw



► CLEANING



- Do not immerse in water or any liquid; wipe down with damp cloth. Do not use HOT or COLD water; using “room-temperature” water is acceptable
- Avoid using running water and disinfectant sprays on or near open slots located on light unit. Carefully wiping with damp cloth is ok.
- Do not use disinfectants containing glutaraldehydes, iodophors, ammonia, alcohol, or ethanol.
- Do not autoclave

Disinfection: Use of quaternary ammonium compounds is ok. Dry thoroughly. For a full list of recommended disinfectants, visit www.surgitel.com/help

FACTORY REFURBISHMENT CLEANING: is available if you come across a difficult cleaning situation. Call customer support for details: 800-959-0153

► OPERATION

- Charge Time (Battery Pack) = approximately 2-3 hours
- Maximum continuous operation at full load is approximately over 8 hours
- Attach the LED light to loupes or glasses using an appropriate adapter
- Use the included garment clips to route the cable appropriately
- **LED cable inlet (1):**
Provides power to LED light unit
- **Power switch (2):**
Rotate to turn light off/on
- **Light intensity (2):**
Adjust the position of the knob to adjust the light level
- **Rechargeable inlet (3):**
Recharges the battery with the aid of an AC charger
- **Battery charge level indicator light (4):**
GREEN = fully charged, RED = charging, FLASHING RED = Error



LED Extension Cable Connection

Make sure the cable connection is completely secure as shown in **Figure 3**. **Figure 1** and **Figure 2** both show a connection that is insecure. Even if you hear or feel a click when connecting, and there is no metal connection showing, the connection may still be loose. Be sure the connection is as tight as possible. Ideally, you will feel two clicks when the connection is completely secure.



Figure 1



Figure 2



Figure 3

Note about light-cured composites

- Although it is not recommended to use this LED Light while working with light-cured composites, setting the light to a lower light intensity may allow you to work briefly with materials before hardening
- Using the appropriate COLOR FILTER (orange filter) is STRONGLY RECOMMENDED when using light-cured materials with the LED Light

► OPERATING CONDITION

- Ambient temperature range 10 to 40°C
- Relative humidity range 30 to 75%
- Atmospheric pressure range 70 to 106 kPa

► TRANSPORT & STORAGE CONDITION

- Ambient temperature range -40 to 70°C
- Relative humidity range 10 to 100%
- Atmospheric pressure range 50 to 106 kPa

► ATTACHING LIGHT ADAPTER TO LOUPE



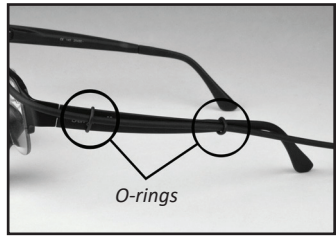
Dove Tail Adapter



Clip Adapter

- Attach the LED light to loupes or glasses using appropriate adapter

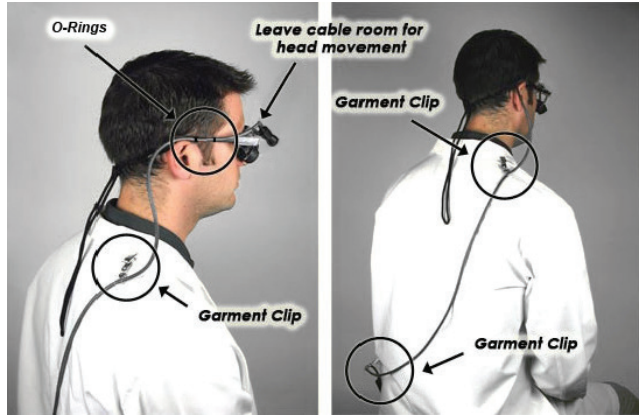
► ADJUSTMENTS



- Attach light cord to frame by sliding both o-rings onto temple arm, as shown

Note: O-rings are attached to LED cord

► CABLE ROUTING



Warning:

Battery Control Pack Belt Clip

- Improper use of the belt clip can lead to product damage. Refer to photos shown to the right for correct use.



Battery Control Pack Placement

- Positioning the battery pack incorrectly can lead to belt clip damage. Refer to the photos shown to the right for correct placement.

